

# Finnegan's Teeth

Press Release

[www.finnegansteeth.info](http://www.finnegansteeth.info)

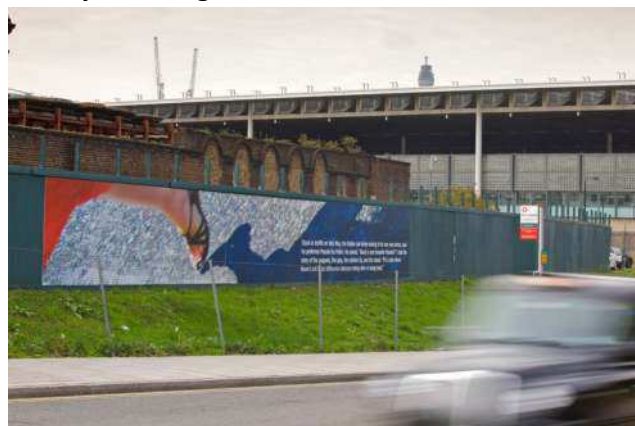
Finnegan's Teeth - Public Project and Artist's Book by Judith Cowan



Fish and Coal Building



York Way Canal Bridge



Goods Way Hoardings

Finnegan's Teeth is a visual journey seen through the eyes of the animal Finnegan. Taking place around King's Cross in London, it follows the area as it goes through construction and deconstruction. Photographs of the happenings and events that Finnegan notices on his travels accompany the voices of the street life around him.

Finnegan's Teeth is the title of a recently published book by artist Judith Cowan, which has now developed into a major public Art project on the edge of the Kings Cross Central regeneration site. The happenings and events of Finnegan's experiences are placed back into the spaces from which they came.

Finnegan, the dog, is the only named narrator, as he reveals a bizarre world in the giant images and text which now appear on an installation in the historic Fish & Coal Building within Kings Cross Central, on hoardings on Goods Way and on the wall adjacent to the Regent's Canal under York Way.

The episodes, based on real encounters, are spoken by different voices on the street. The absurd is a point of departure, experienced alongside something rational. Something strange happens as these re-told tales return to their place of origin making the ordinary become extraordinary.

Map and info [www.finnegansteeth.info](http://www.finnegansteeth.info)

10th October – 8th November

Fish and Coal Building, Goods Way hoardings, Regent's Canal beneath York Way Bridge

"This is a great project, showing a different perspective on the area. Arts and culture are an important component of King's Cross Central and we are delighted to be working in partnership with the British Library and British Waterways to support such a novel arts programme." Anna Strongman, Project Manager at King's Cross Central

Images/interviews: [finnegansteeth@me.com](mailto:finnegansteeth@me.com)

Contact: Joseph Hill, Project Manager, 07515 563 476

The project partners are King's Cross Central, British Waterways, Hub TV production company and Stylo Graphics.

Finnegan's Teeth map is available from the British Library reception desk and The German Gymnasium, 26 Pancras Road and [www.finnegansteeth.info](http://www.finnegansteeth.info)

Finnegan's Teeth Artist's book is available to buy from the British Library shop.

Finnegan's Teeth, artist's book, £9.50

published by RGAP [www.rgap.co.uk](http://www.rgap.co.uk)

distributed by [www.cornerhouse.org/books](http://www.cornerhouse.org/books)

Judith Cowan, artist - [www.judithcowan.com](http://www.judithcowan.com)

Judith Cowan has exhibited in group exhibitions at the Hayward Gallery and the Serpentine Gallery and abroad in Italy, Norway and USA. She has had solo exhibitions at the Yorkshire Sculpture Park, Camden Arts Centre, Kettle's Yard, Angel Row Gallery and in Italy at Studio Stefania Miscetti, Museo Laboratorio di Arte Contemporanea, and Erica Fiorentini Gallery, Rome. Her work is included in public collections in Britain, USA and Italy.

Gill Hedley, curator

Gill Hedley is currently working as an independent curator with the Calouste Gulbenkian Foundation, UK, The Foundling Museum, London, and the Museum of Childhood, London. She was formerly the Director of the Contemporary Art Society and is Chair of Spike Island, Bristol.

About King's Cross Central

King's Cross Central one of the most significant development and regeneration opportunities in central London. Over the next 15 years a new urban district is being created. As the 67 acre development progresses King's Cross Central will participate in and lead a range of cultural programmes, ensuring that Art is at the centre of the regeneration of King's Cross.

For more information on King's Cross Central contact: Shirin Homawala, London Communications Agency, on 020 7612 8480 or via [sh@londoncommunications.co.uk](mailto:sh@londoncommunications.co.uk)